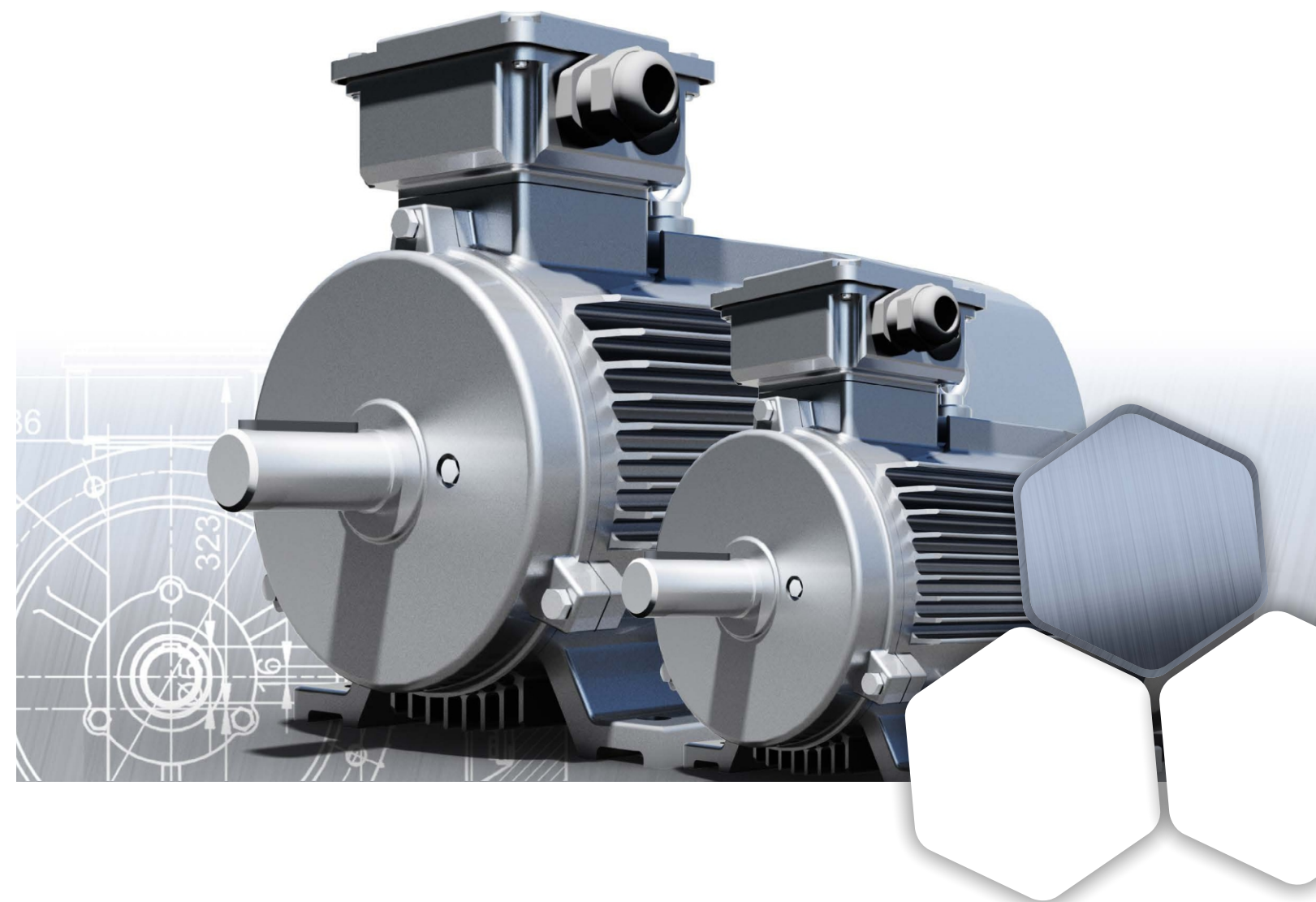




**Drive The World More Efficiently**



**OMEC MOTORS**

📍 No.8, Lu Dai Road, Yangshan Industrial Park, Huishan District, Wuxi City  
☎ +1-404-6447638    ✉ sales@chinaomec.com  
🌐 www.chinaomec.com    www.omecmotors.com

**Wuxi Original Mechanical & Electrical Co.,Ltd.**



# COMPANY PROFILE



OMEC MOTORS is one of the leading electric motor companies focus on high efficiency and special applications, with global facilities in Europe, North America, China and Australia, and offers distribution and service in 50+ counties.

OMEC China, located in Wuxi, was founded in 2010 and is a joint Venture with Netherlands based PEJA group whose history was since 1937.

We offer one-stop purchase availability for

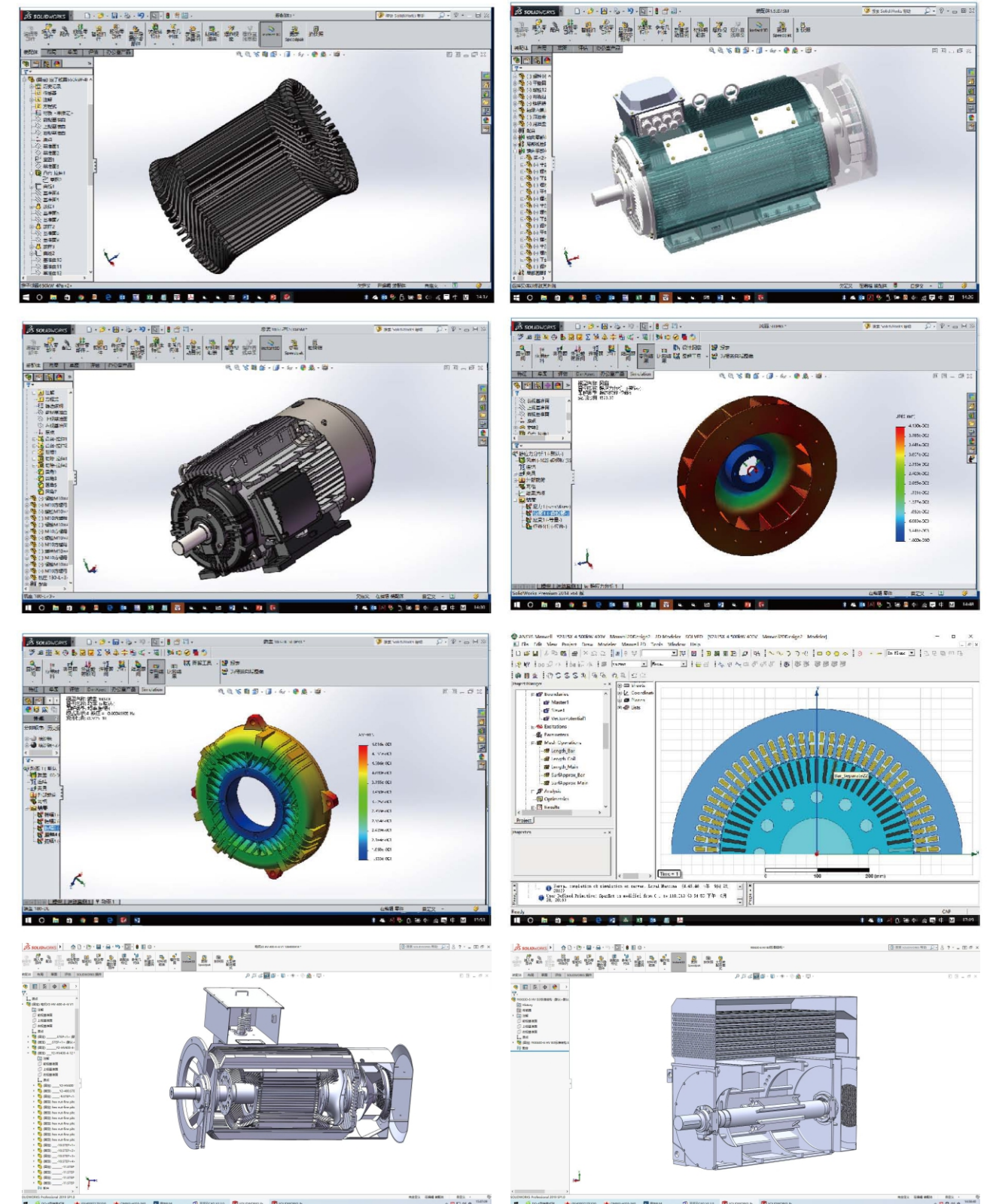
our customers, including low voltage, medium & high voltage motors and inverter according with IEC and NEMA, with efficiency IE3/IE4/IE5 induction motor and synchronous permanent magnetic motor, synchronous reluctance motor, high speed motor, low speed high torque motor, mining motor, marine motor, heavy duty VFD motor etc.

We have various certifications including ISO9001, ISO14001, UL, CE, ATEX, DNV, LR, BV, RINA, ABS, CCS and RS.



# R&D

The company has R & D centers and engineering centers in Europe, Australia and China, introducing all kinds of senior engineers and industry application experts, using Solidworks, AutoCAD and other design and application simulation software, combined with practice and process verification, continuous iterative optimization to ensure that the products maintain the leading level in the industry.





# QUALIFICATION CERTIFICATION

ISO9001:2015

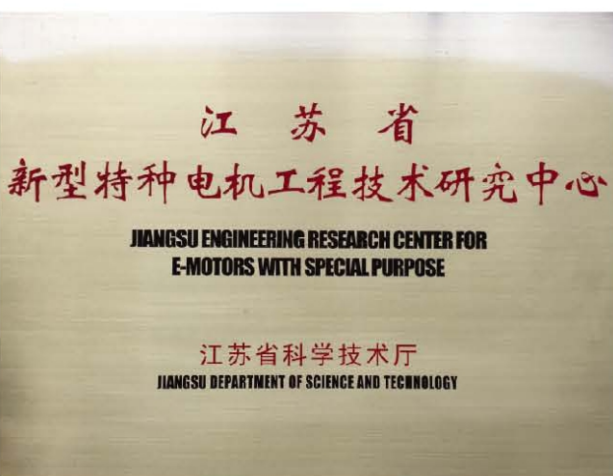
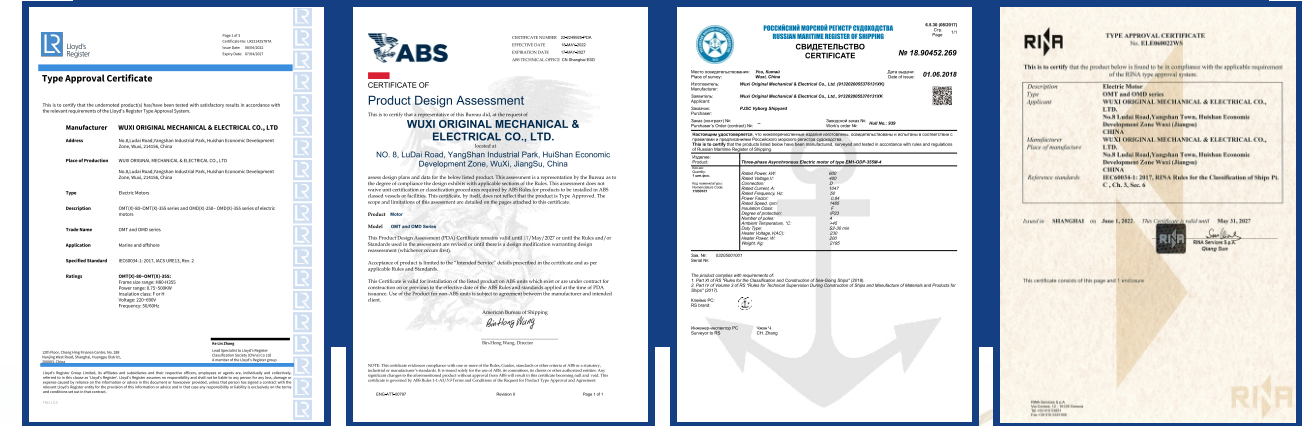
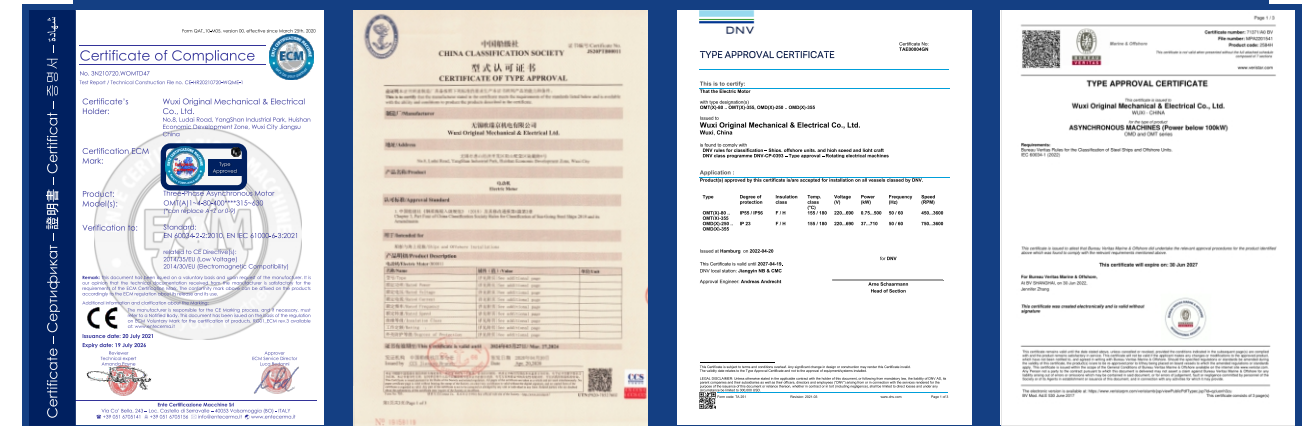
ISO9001:2015 Quality Management  
System Certificate

ISO14001:2015

Environmental Management System Certification

ISO9001:2015 SGS SGS Quality Management System Certification

# QUALIFICATION CERTIFICATION



- China Certification Center for Energy Conservation Product (CECP)
- China Compulsory Certificate
- Certificate Issued by Underwriter Labor
- Certificate of CE
- China Classification Society Certificate of type approval
- Certificate of DNV-GL
- Certificate of Bureau Veritas
- Certificate of Lloyd's Register Quality Assurance
- Certificate of American Bureau Of Shipping
- Certification by Russian Classification Society
- Certified by Italian Bureau of Shipping

# QUALIFICATION





# INDUSTRY APPLICATION



Winter Olympic Snowmaking Project



Compressor



Ventilation



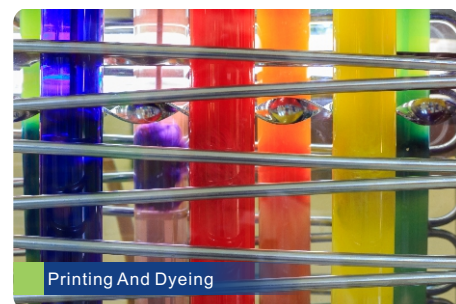
Paper Making



Metallurgy



Marine



Printing And Dyeing



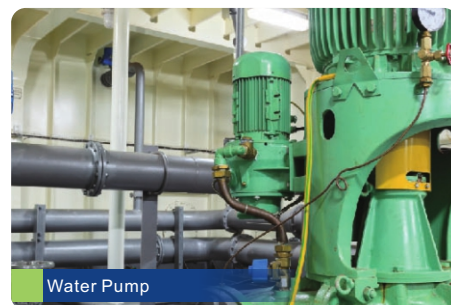
New Energy



Wind Power



Low Speed High Torque PM Motor



Water Pump



Mine



Water Treatment



Refrigerating



Textile Machinery

# TEST STATION

Our Testing Station is authorized by China Institute of Standardization and Jiangsu Province Entry-Exit Energy Efficiency Testing Center.





# PRODUCTION EQUIPMENT AND FACILITIES



■ Machining Workshop



■ CNC Lathe



■ Winding Workshop



■ VPI



■ Automatic Truss Grinder Line



■ CNC Truss Lathe Machining Line



■ Automatic Winding Machine



■ Automatic Wiring Line



■ Large Size Grinder



■ CNC Milling Center



■ Assembly Line



■ Painting Line



# LOW VOLTAGE STANDARD SERIES

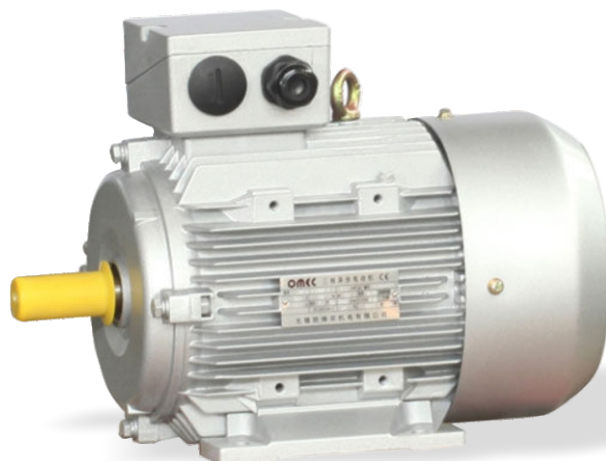
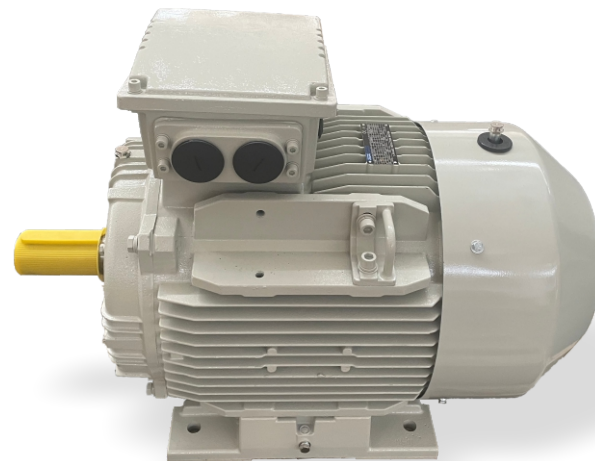


## OMT Series High Efficiency Motor

IEC Standard: IE3/IE4/IE5  
Frame Size: H80~H560  
Power Range: 0.75kW~2000kW  
Voltage: 380V~1000V  
Cooling Mode: C411/416

## OMM Series Multi Mounting High Efficiency Motor

Frame Size: H160~H280  
Power Range: 7.5kW~110kW  
Voltage: 380V~1000V  
Cooling Mode: IC411/416



## OMA Series Aluminum High Efficiency Motor

Frame Size: H56~H160  
Power Range: 0.12kW~22kW  
Voltage: 380V~690V  
Cooling Mode: IC411/416

# LOW VOLTAGE STANDARD SERIES



## OMD Series IP23 Motor

Frame Size: H200~H450  
Power Range: 45kW~2000kW  
Voltage: 380V~1000V  
Cooling Mode: IC01/06

## OMR Series Wound Rotor Motor

Frame Size: H280~H560  
Power Range: 55kW~2000kW  
Voltage: 380V~1000V  
Cooling Mode: IC411

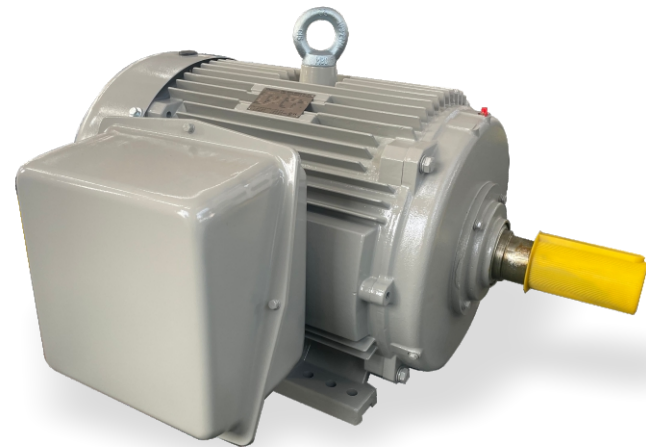


## OMX Series Compact Motor

Frame Size: H315~H560  
Power Range: 250kW~2000kW  
Voltage: 380V~1000V  
Cooling Mode: IC411/416



# LOW VOLTAGE STANDARD SERIES

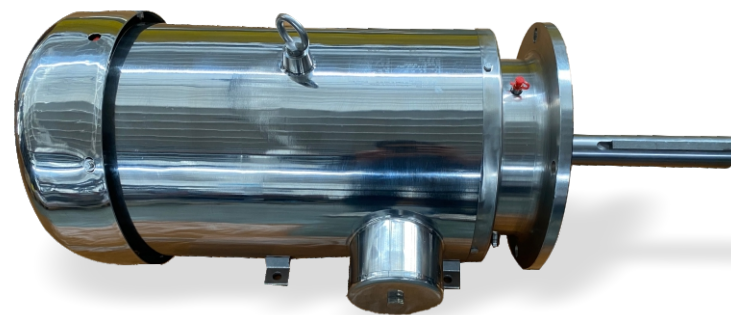
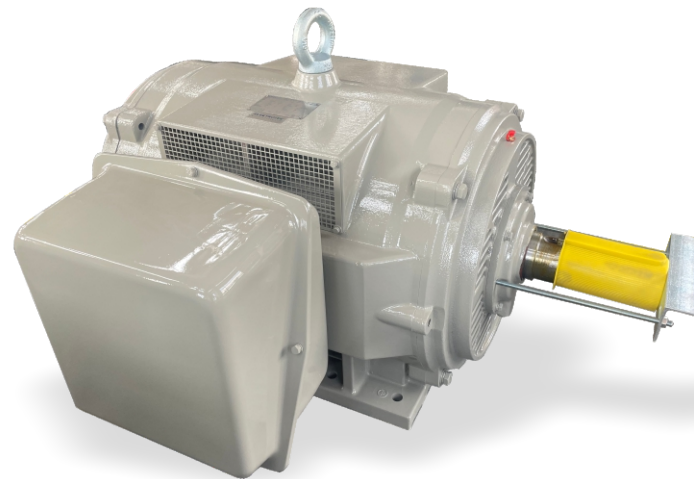


## NEMA TEFC Motor

Frame Size: H143~H6808  
Power Range: 1HP~1000HP  
Voltage: 230V 460V 575V  
Cooling Mode: IC411/416

## NEMA ODP Motor

Frame Size: H56~H449  
Power Range: 1HP~300HP  
Voltage: 230V 460V 575V  
Cooling Mode: IC01



## NEMA Stainless Steel Motor

Frame Size: H56~H365  
Power Range: 1HP~60HP

# MEDIUM & HIGH VOLTAGE STANDARD SERIES

## OHT Series Compact Motor

Frame Size: H315~H560  
Power Range: 200kW~1800kW  
Voltage: 2.3kV~13.2kV  
Cooling Mode: IC411/416



## OAA Series Air -Air Cooling Motor

IEC standard: IE3/IE4  
Power Range: 200kW~10000kW  
Voltage: 2.3kV~13.2kV  
Cooling Mode: IC01/611/616/666/511

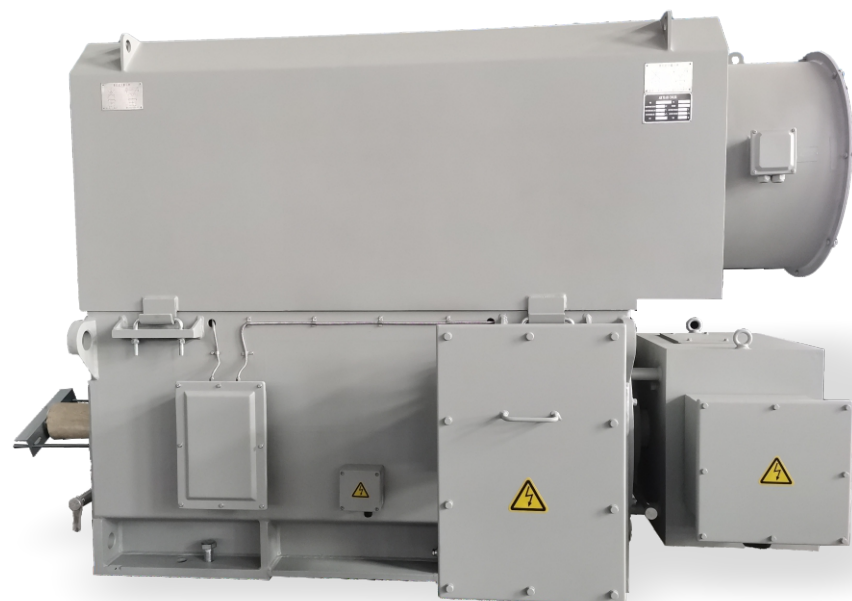




# MEDIUM & HIGH VOLTAGE STANDARD SERIES

## OAW Series Air -Water Cooling Motor

Frame Size: H355~H900  
Power Range: 710kW~10000kW  
Voltage: 2.3kV~13.2kV  
Cooling Mode: IC81W



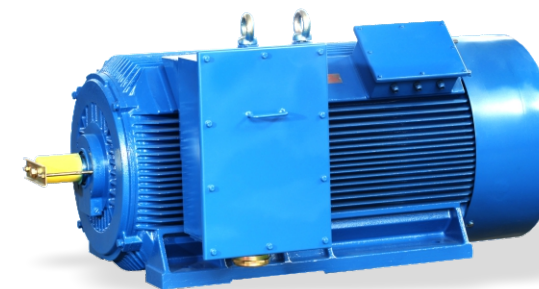
## OAR Series Slip Ring Motor

Frame Size: H315~H900  
Power Range: 200kW~8000kW  
Voltage: 2.3kV~13.2kV  
Cooling Mode: IC411/611/616

# PM MOTOR SERIES

## PM Synchronous High Efficiency -Low Voltage Motor

Frame Size: IE4/IE5  
Power Range: 4kW~3000kW  
Voltage: 380V~1000V  
Cooling Mode: IC411/416

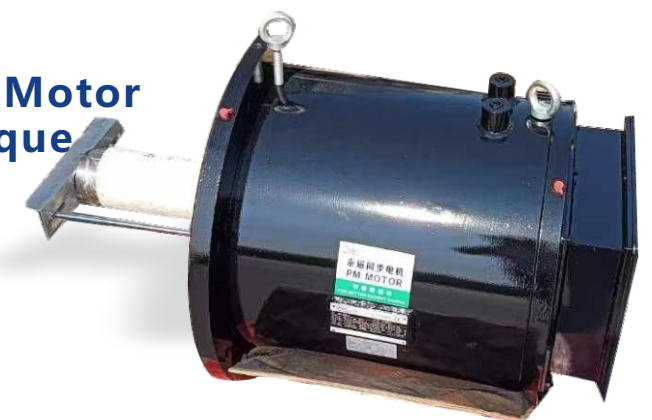


## PM Synchronous High Efficiency -High Voltage Motor

Frame Size: IE4/IE5  
Power Range: 200kW~10000kW  
Voltage: 2.3kV~13.2kV  
Cooling Mode: IC01/611/616/666/511/81W/86W

## PM Synchronous Direct Drive Motor with Low Speed And High Torque

Frame Size: H225~H1000  
Power Range: 450NM~250000NM  
Voltage: 380V~13200V  
Cooling Mode: IC416/71W

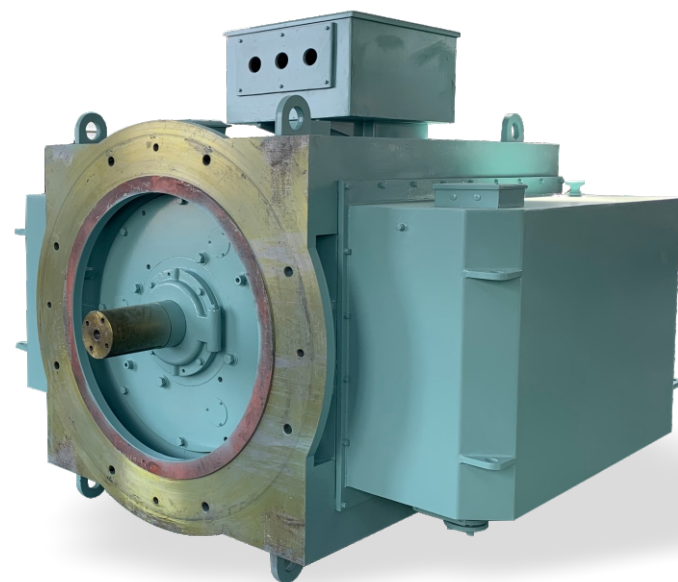




# SPECIAL APPLICATION AND SOLUTIONS

## Marine Application Low Voltage, General Purpose, Propeller Thrust, Main Propulsion

Frame Size: H80~H630  
Power Range: 0.75kW~2500kW  
Voltage: 440V~690V  
Cooling Mode: IC01/411/416/611/616/71W



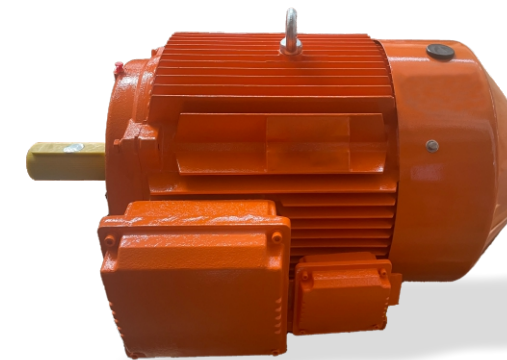
## Marine Application Medium & High Voltage, General Purpose, Propeller Thrust, Main Propulsion

Frame Size: H315~H900  
Power Range: 200KW~10000KW  
Voltage: 2.3kV~13.2kV  
Cooling Mode: IC01/411/611/616/81W/86W

# SPECIAL APPLICATION AND SOLUTIONS

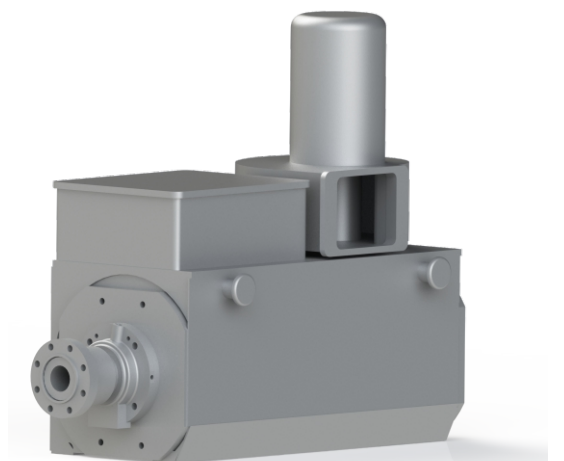
## Mining Application Low Voltage

Frame Size: H80~H560  
Power Range: 0.75kW~2000kW  
Voltage: 380V~1000V  
Cooling Mode: IP65/66



## High Speed Motor

Frame Size: H132~H355  
Power Range: 75kW~800kW  
Voltage: 6000RPM~25000RPM  
Cooling Mode: 380V~690V



## Low Voltage Frequency Converter

Power Range: 0.75kW~1000kW  
Voltage: 230V~690V





# DISTRIBUTION



## ◆ Sales Office

Beijing, Shanghai, Guangzhou, Shenzhen, Tianjin, Chongqing, Nanjing, Hangzhou, Hefei, Qingdao, Shijiazhuang, Shenyang

## ◆ Sales Company

OMEC, Netherlands, OMEC, Korea, OMEC, North America, OMEC, HongKong, OMEC, Australia ( EMT OMEC PTY LTD.)

## ◆ Main Distributor

Thailand, Singapore, Malaysia, Philippines, India, Brazil, Russia, Dubai, Saudi Arabia, South Africa, Monaco, Greece, Italy, Poland, USA, Mexico, Canada, UK, France, Germany, Denmark, Belgium, Spain, Portugal, Indonesia, Panamá, Colombia, Ecuador, Chile, Australia, Egypt, South Korea